

Second generation primary control monitor supports multiple inputs, rendered on an 8-megapixel screen, for the highest quality and flexibility in data display.

- 3840 x 2160 resolution.
- 60 Hz zero latency.
- Anti-reflective.
- 500 cd/m<sup>2</sup> brightness.
- 3000:1 contrast ratio.
- Pure White LED backlight.
- Ultra low heat and power.

### New in Version C:

- Instant channel change - Main to Backup.
- On board recording port - Exactly what the controller sees.



### Perfect rendering

The Thruput GF VT 16 2G-85 displays 8 megapixels across its 85" screen with a pixel pitch of 0.4875 mm.

Using one screen instead of several, the user's eye and head movements are reduced and viewing comfort is increased:

- Without obtrusive bezels, all relevant data is concentrated within the optimum field of view.
- All pixels the same size.
- Seamless boundaries between sources.

### Wide Viewing Angles

- Wide viewing angles of 176° x 176°.
- Minimal colour shift, even at acute angles.

### New possibilities

The large size and high resolution creates new possibilities for information display.

- View one 4K x 2K image across the entire screen.
- Combine videos to view several channels of information on one screen.



## Pure colour brightness control

Brightness is controlled by Thruput's pure colour control technology, making it ideal for any Operations Room:

- Displayed colours are perfect at all brightness settings.
- Pure White LED Backlight.
- Maintain colour accuracy and contrast at all brightness settings.
- Uniform brightness across the screen.

## A safe and green solution

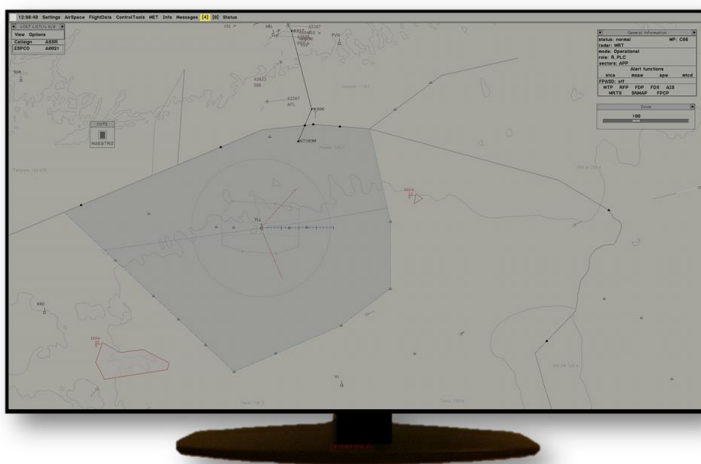
The monitor does not use any hazardous materials, and is fully RoHS compliant.

- Low power consumption.
- The LED backlights are mercury free.
- Up to 5 year warranty, 24/7 continuous operation.

## Life cycle benefits

Greatly reduced complexity at the working position, a single monitor with optimum human factors will be:

- Cheaper to install and run than several smaller monitors.
- Less heat in the operations room.
- Less tiring for the user, with potential improvements to staff health and well-being, that may also reduce fatigue related errors.



## Specification

Version C

Inputs	2 off DP 1.2 (60 Hz) 2 off HDMI 2.0 (60 Hz)	
Outputs	DP 1.2 Record 3.5 mm Audio jack RJ45 Remote control and monitoring	
Modes	KVM	Fast video switching Supports USB/PS2 switches
	Single	Full screen
	Dual	Top and bottom
		Left and right
Quad	One in each quadrant	
Resolution	3840 x 2160	
Pixel Pitch	0.4875 x 0.4875 mm	
Brightness	500 cd/m <sup>2</sup>	
Contrast	3000 : 1	
Colour	32 bit colour	
Surface	Anti-glare and anti-reflective	
Power	Universal input voltage, worldwide use. Typically below 40W (normal operation). Main + Optional redundant PSU's.	
Noise	0 dB (silent operation)	
Size	190.6 x 108.7 x 8 cm	
Weight	56 Kg	
Mounting	VESA 500 x 400 mm centres	
MTBF	87,000 hours (25% brightness)	
Backlight	LED	
Update	60 Hz, zero latency (DP)	
Compliance	<ul style="list-style-type: none"> <li>• Human Factors Criteria for Displays: A Human Factors Design Standard (FAA DOT/FAA/TC-07/11).</li> <li>• CE, FCC and ROHS.</li> </ul>	
Manage	TELNET, SNMP, DDC/CI.	
Options	Power	Redundant Power Supply
	Record	Sentinel DP 1.2 recorder
	Extend	Sentinel KVMX extender
	Install	Desk top stand